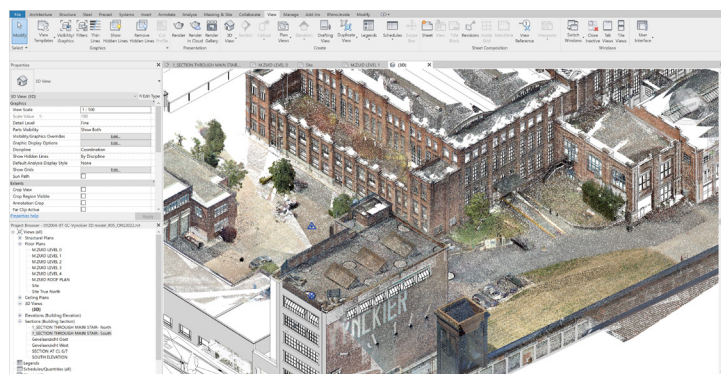
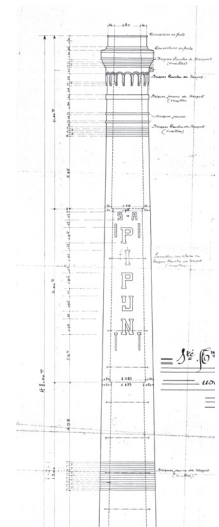
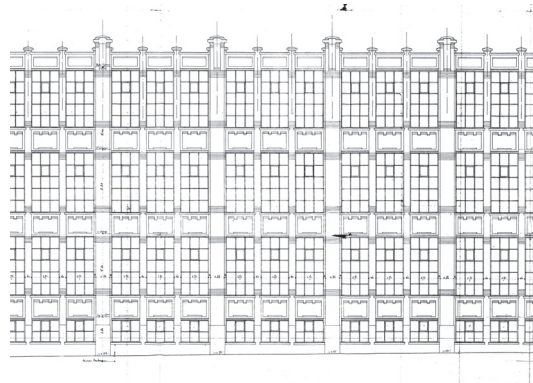
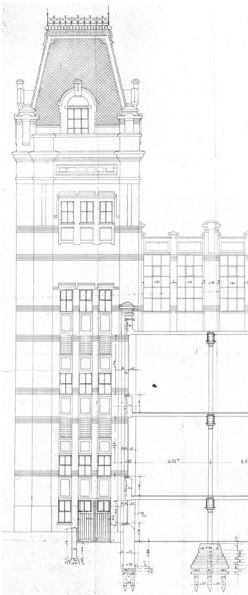




Textile Factory, 1923.



BIM Model with Point Cloud Survey

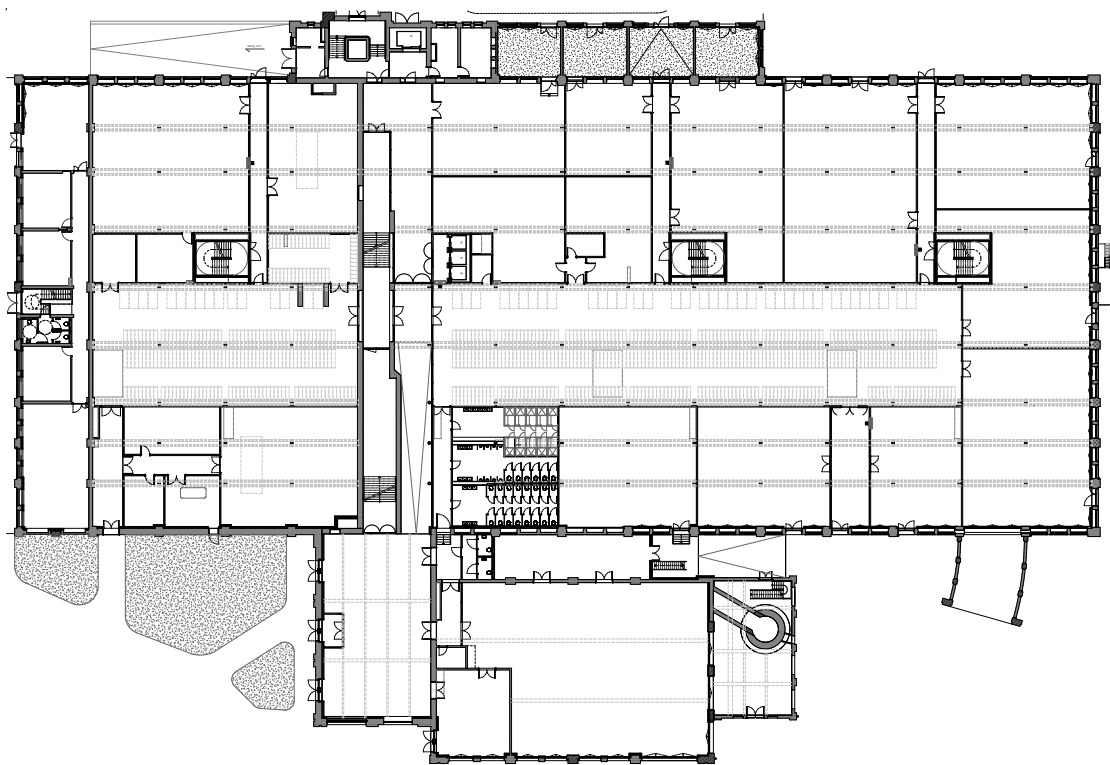
**Textile Factory Adaptive Re-use, Ghent, Belgium, 2021-2023.** Adaptive re-use of an early 20th century textile factory into light industrial workshops, office and event spaces. After extensive survey and documentation of the layers of building, particularly the windows and facade elements, the project was awarded a historic renovation grant of 1mil. EU.

The building is a monument in its own right, and new design interventions increase the quality and comfort of working spaces, and contemporary building performance measures.

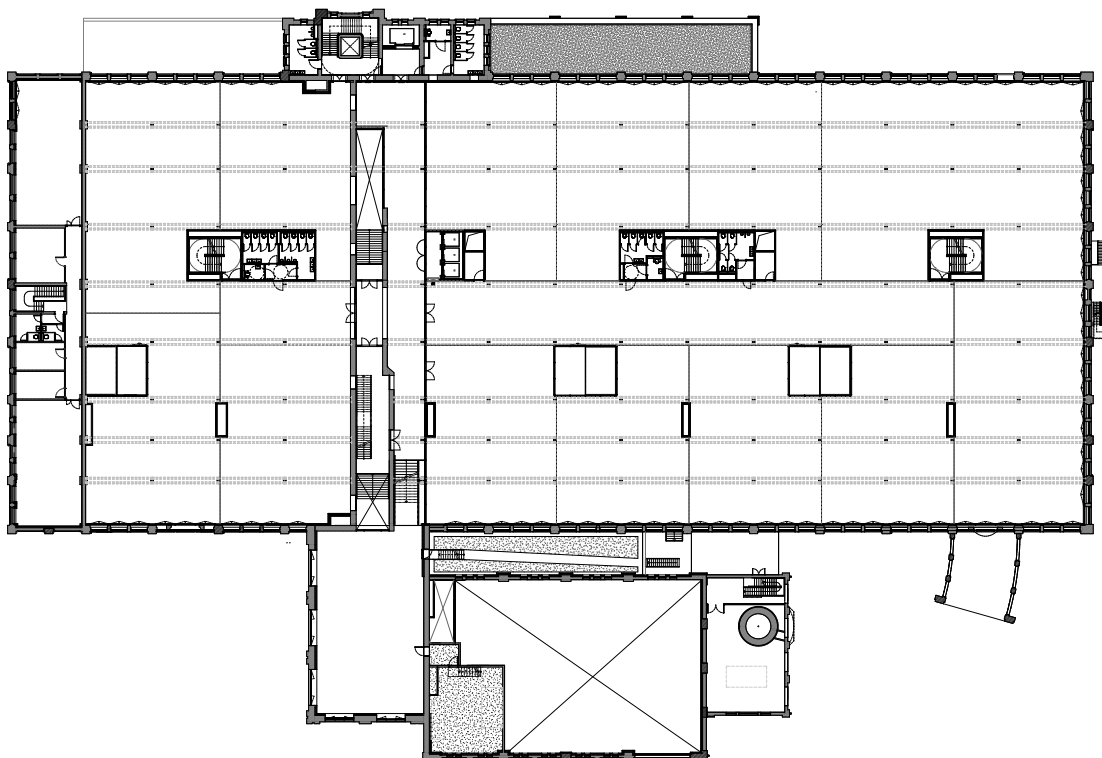
Double skin glazing resolved the challenge to maintain the historic character of the facade with a high performance building envelope. New and existing light wells were opened in the center of the building to allow light to penetrate deep floor plates. A central stair case and generous corridors connect building tenants in a series of conveyance strategies and shared amenity zones near light and air.

**Project Leader,** Schematic Design - Bldg. Permit, oversaw design team from project start through building permit including a historic renovation grant.

**ORG Permanent Modernity w/ Alstadt**  
292,000 SF (27,195 SQM)



Ground Level +0



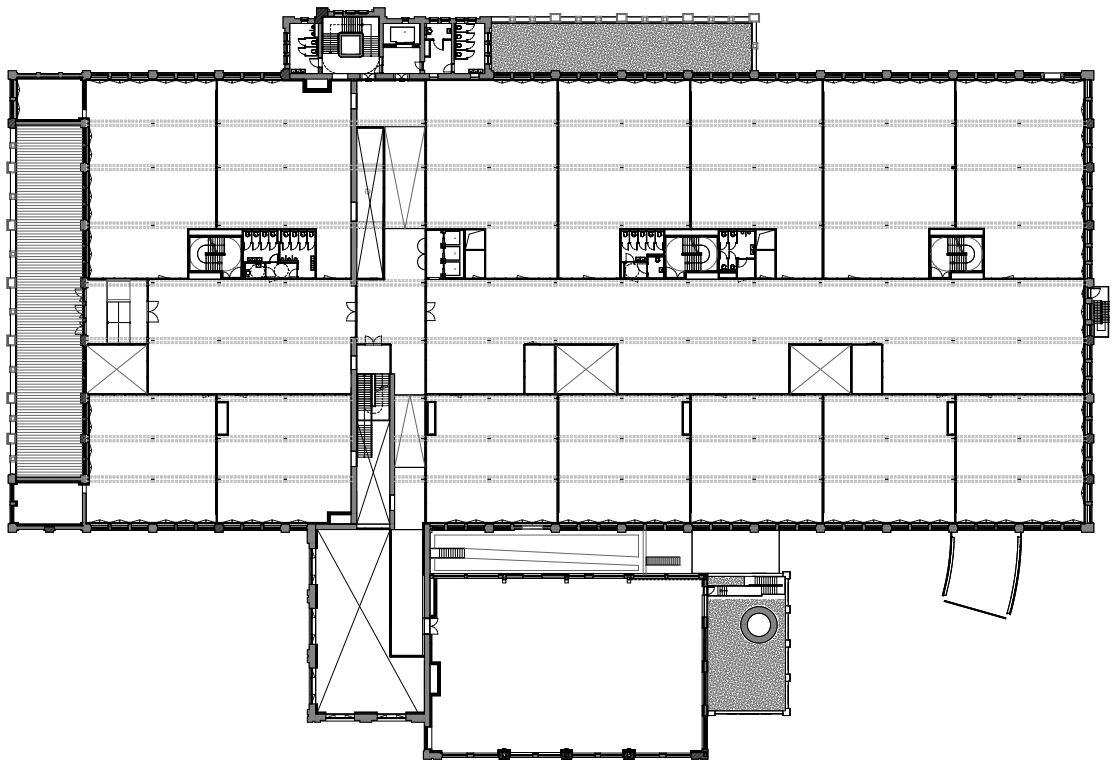
Level +1



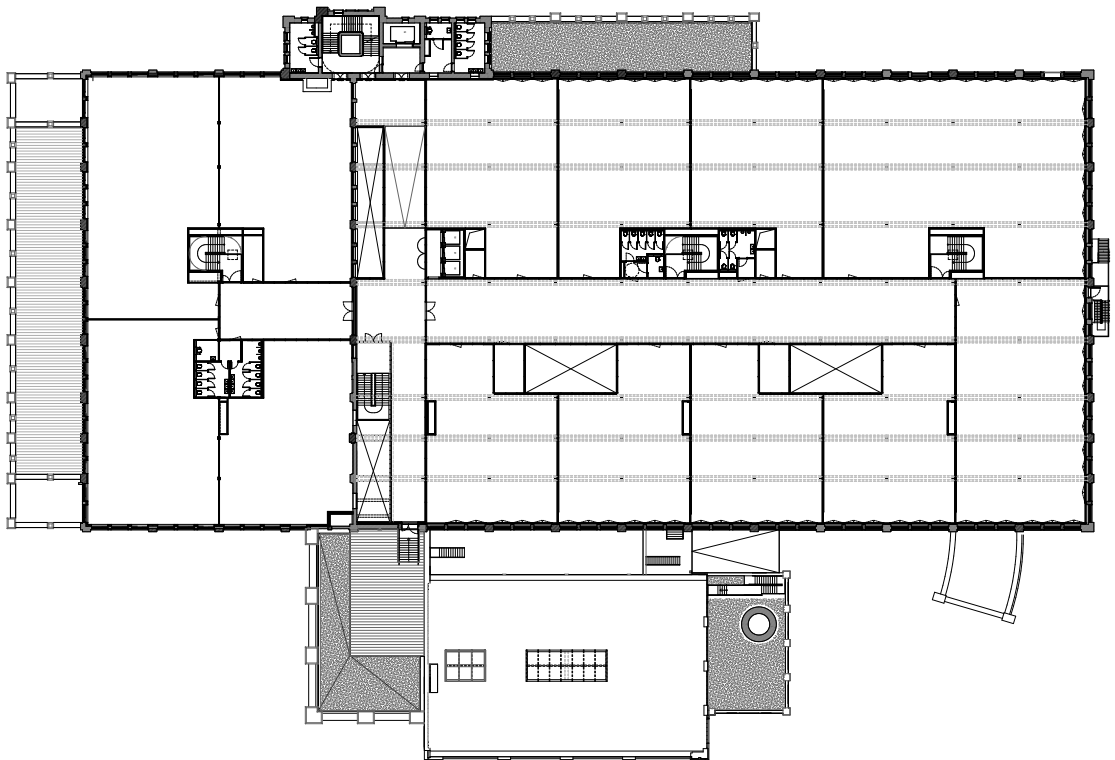
Exterior toward Main Entry  
(Image Credit: ORG | Alstadt)



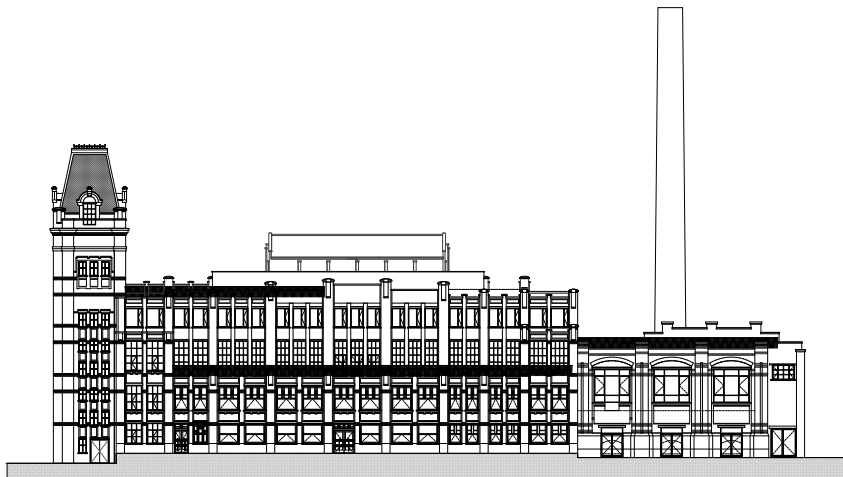
Interior view at Level +2 N/S corridor toward new light wells  
(Image Credit: ORG | Alstadt)



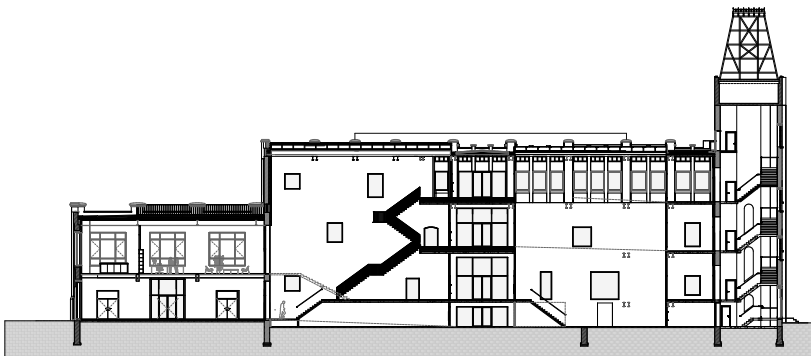
Level +2



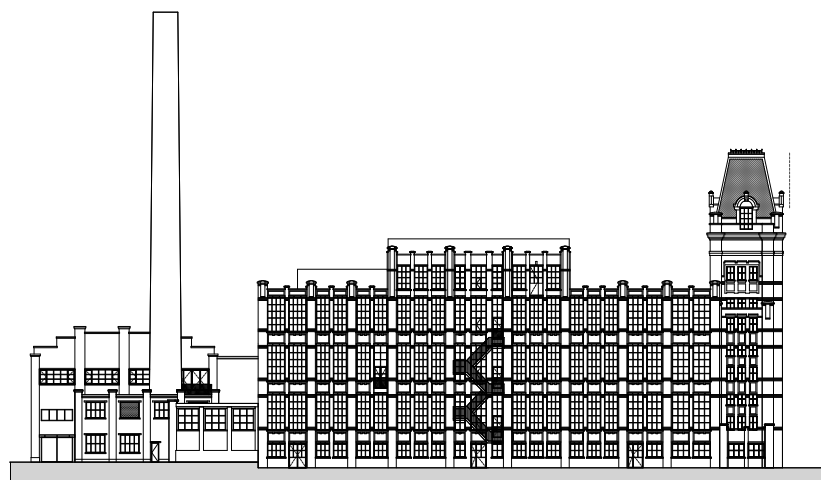
Level +3



South Elevation



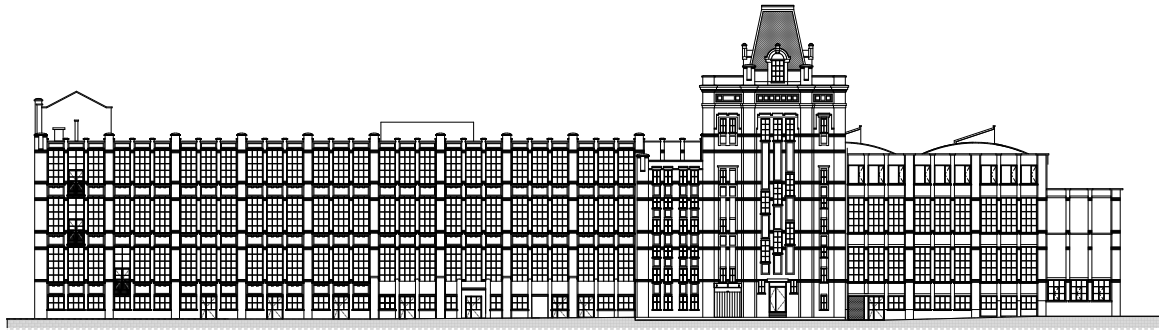
Section through Entry, Transmission Shaft, and tower



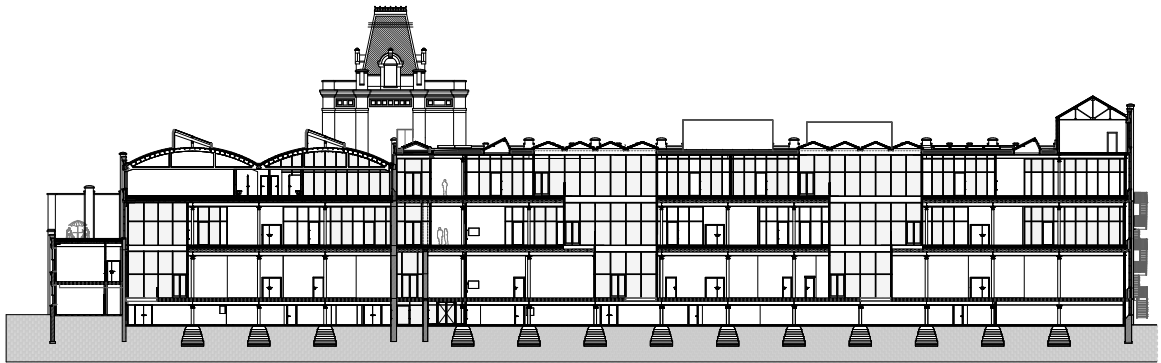
North Elevation



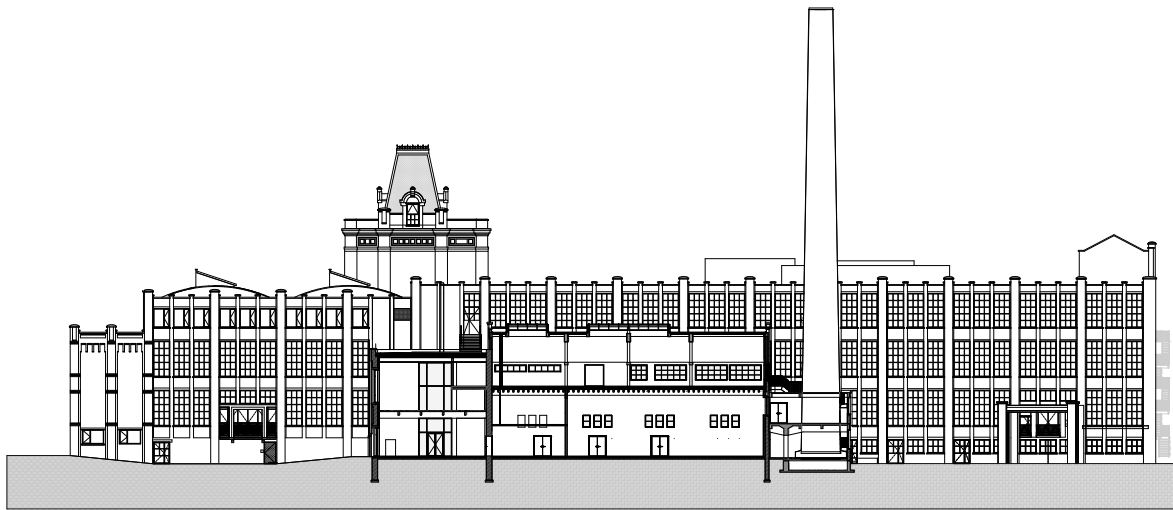
Interior view at Level +2 E/W vertical core (former transmission shaft)  
(Image Credit: ORG | Alstadt)



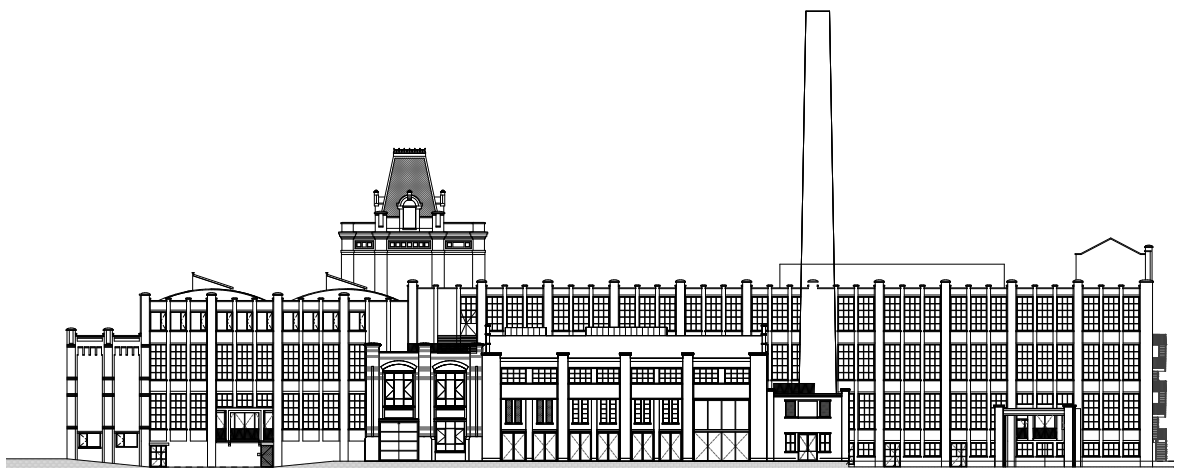
West Elevation



Section through N/S Corridor and New Light Wells



Section at Entry and new Fabrication laboratory (former Boiler Room)



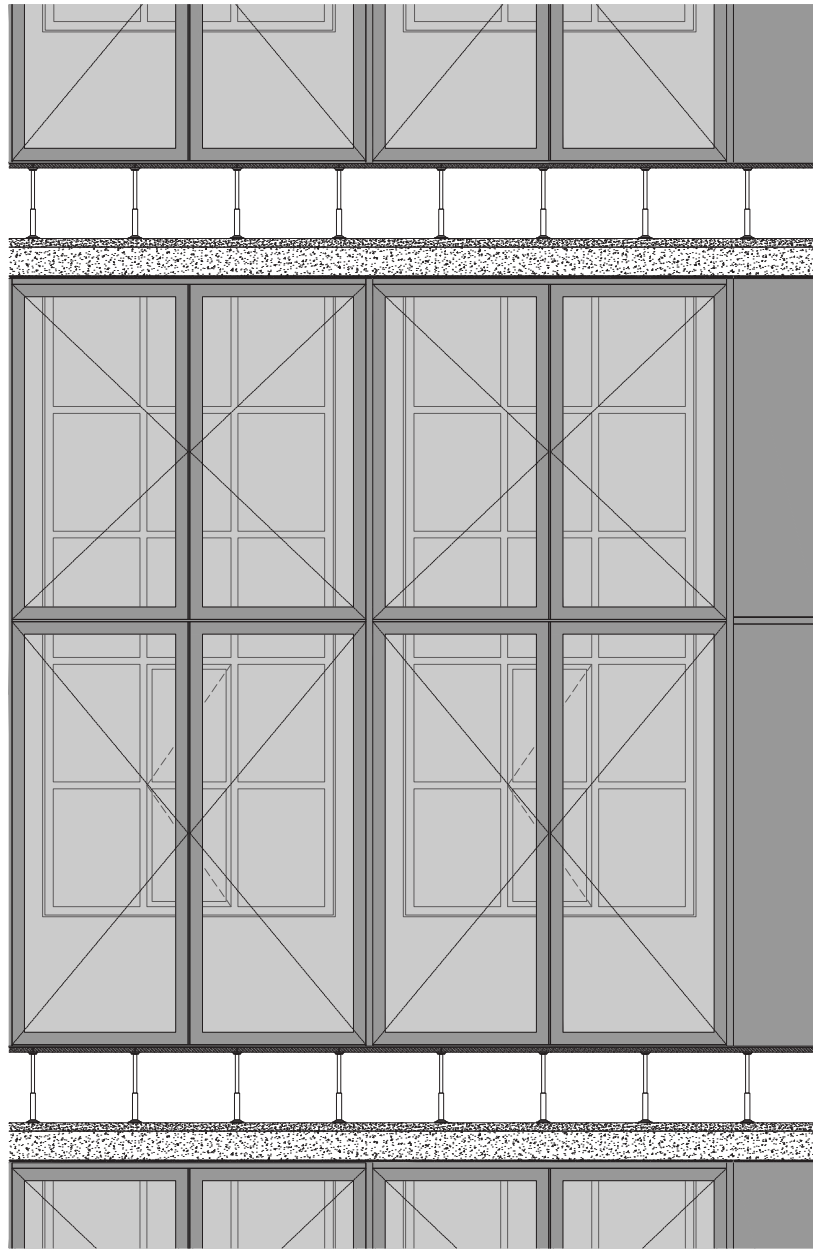
East Elevation



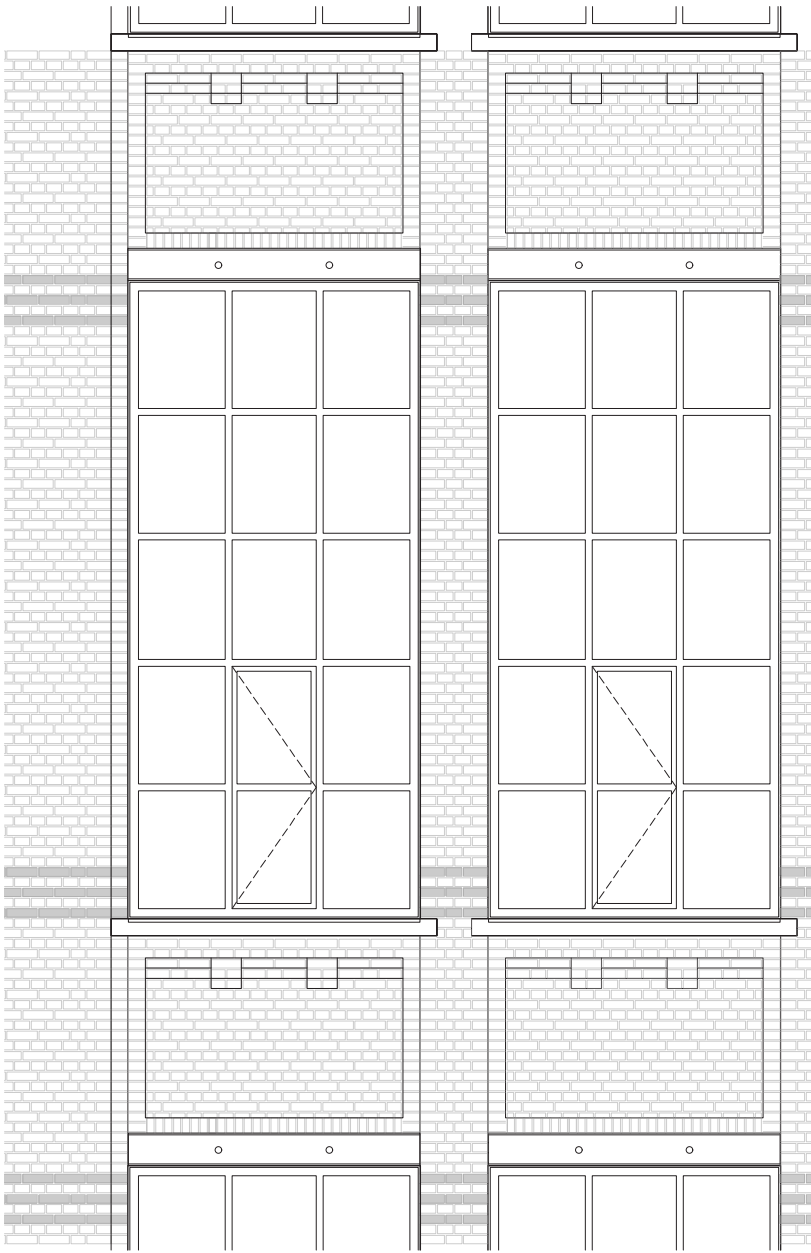
Social incubator amenity at Level + 3 Southern corridor terminus  
(Image Credit: ORG | Alstadt)



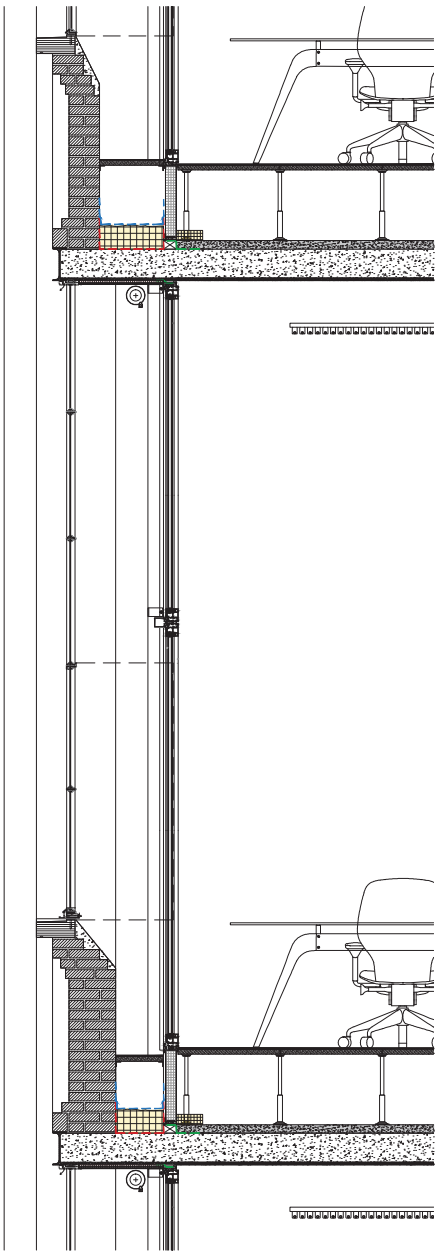
Co-working at Level +2 N/S Corridor  
(Image Credit: ORG | Alstadt)



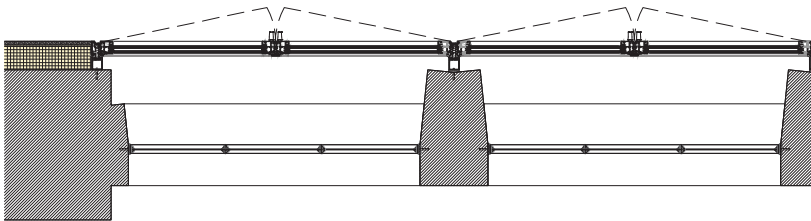
Typical Envelope Detail from interior



Typical Envelope Detail from exterior



Section detail



Plan detail